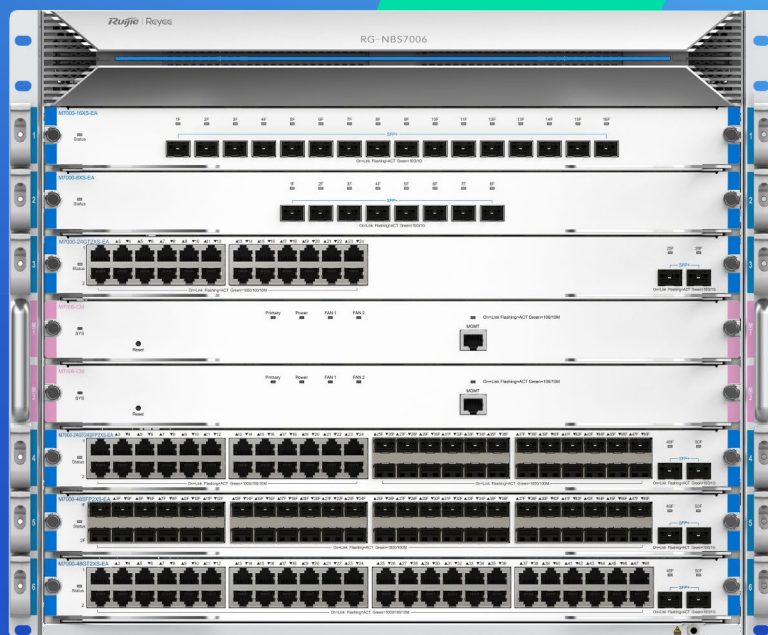


# RG-NBS7006

## Layer 3 Chassis Cloud Managed Switch

DATASHEET



### Highlights

- Modular design provides scalability and flexibility
- High-level redundancy, ensuring nonstop service
- Whole network solution specially designed for SMB Scenarios
- Lifetime management on Ruijie Cloud at anytime anywhere

# Highlight Features

## RG-NBS7006

### Reyee First Chassis Switch Designed for SMB

6 x 1RU Slot  
2 x Supervisor Engine Module

7 Optional Line Cards    MAC 32,000 MAC Address    ARP 8,000 ARP Table    1.92 Tbps Switching Capacity    1440 Mpps Packet Forwarding Rate

## Modular Design: Scalability, and Flexibility

Support 7 types of line cards, up to 96 ports full 10 Gigabit

## High-Level Redundancy, Ensuring Nonstop Service

Redundant Modules    Virtual Cluster Switching (VCS)

4 power slots & 2 fans: ensuing service continuity

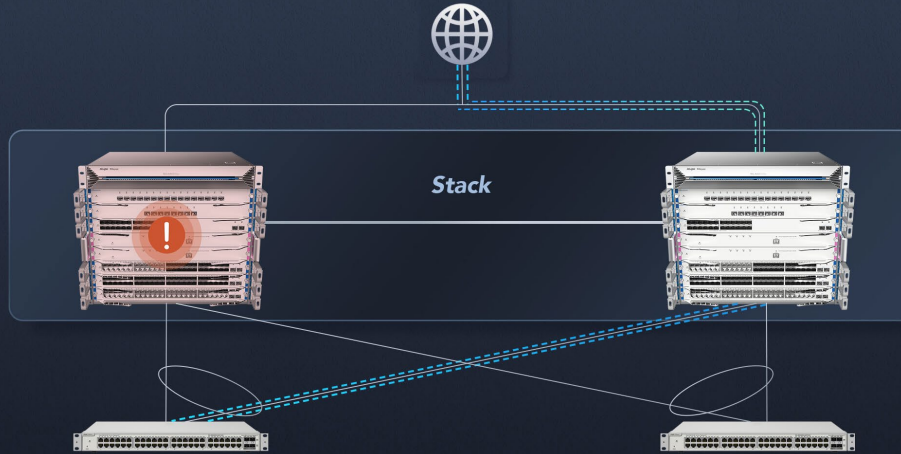
4 x Power    2 x FAN

# Highlight Features

## High-Level Redundancy, Ensuring Nonstop Service

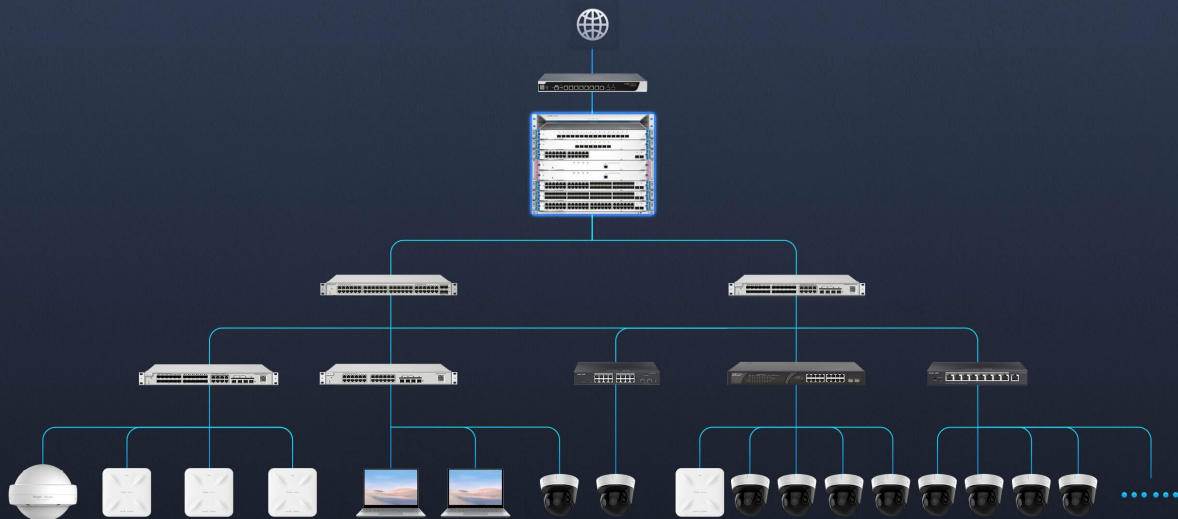
Redundant Modules      Virtual Cluster Switching (VCS)

Virtual Cluster Switching (VCS): service failover within seconds



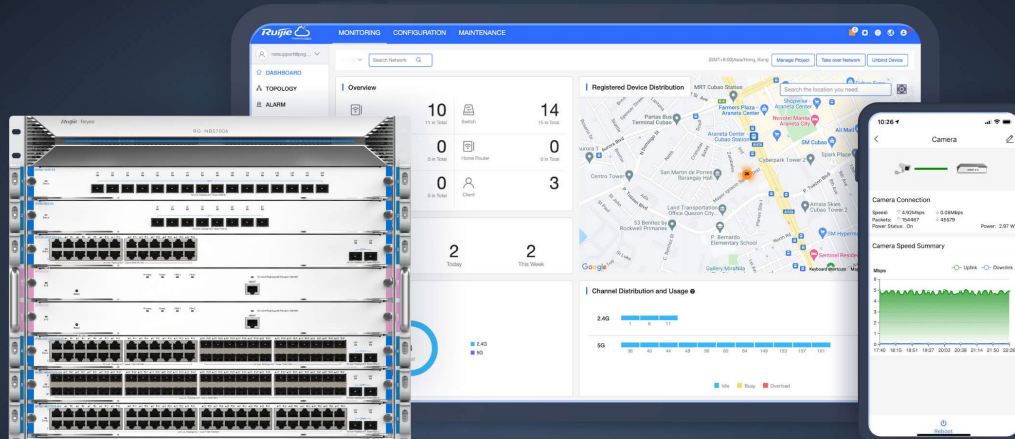
## Whole Network Solution Specially Designed for SMB Scenarios

Up to 4000 terminal devices or 2000 CCTV (2mp H.265) can be accessed



## Cloud, Make Your Business Easy

- SON, zero touch provisioning to Cloud
- Monitor switch statistics at anytime anywhere
- Configure VLANs on Ruijie Cloud APP
- Easy maintenance, save onsite time and cost



# Specifications

## Basic

Model	RG-NBS7006
10/100/1000Base-T ports	288 * 10/100/1000BASE-T ports (Maximum)
SFP ports	288 * SFP ports (Maximum)
SFP+ ports	96 * SFP+ ports (Maximum)
Layer Type	Layer 3
Switching capacity	1920 Gbps
Forwarding rate	1440 Mpps
Packet Buffer	16 Mbit
MAC address table	32,000
Maximum VLAN Support	4094
Dimensions (W x D x H)	442 mm x 410 mm x 396 mm 9U
Weight (With package)	31.25kg
MTBF	> 400,000
Warranty	5 Years

## Layer 2 Features

Jumbo Frame	9216
Flow Control	✓
STP (IEEE 802.1d)	✓
RSTP (IEEE 802.1w)	✓
MSTP (IEEE 802.1s)	-
Port Fast	✓
BPDU Guard	✓
Errdisable Recovery	✓

# Specifications

## Layer 2 Features

Model	RG-NBS7006
Max. Aggregation Group	16
Max. Member per Group	8
Unknow Unicast Storm Suppression	✓
Multicast / Broadcast Storm Suppression	✓
Many-to-One Mirroring	✓
VLAN Range	1-4094
Port-based VLAN	✓
MAC-based VLAN	✓
IP-based VLAN	✓
Voice VLAN	✓
RLDP	✓
LLDP / LLDP-MED	✓
Cable Testing	✓
IGMP Snooping v1/v2/v3	✓

## Software Features

Ping	✓
Traceroute	✓
ACL Entries	1900
Static Routing	✓
IP Standard ACL	✓
MAC-based Extended ACL	✓

# Specifications

## Software Features

Model	RG-NBS7006
IP-based Extended ACL	✓
Port-based Rate Limit (Ingress/Egress)	✓
SNMP v1/v2c/v3	-
DHCP Server	✓
Web Management	✓
Management IP	10.44.77.200
HTTP/HTTPS	✓
Cloud Management	✓
SON (Self-Organizing Network) with IP	✓
Camera Recognition	✓
Loop Prevention	✓
Loop Notification	✓
PoE Usage Alarm	-
Protection Port	✓
IP Source Guard	✓
Anti-ARP Spoofing	✓
DHCP Snooping	✓
DHCP Client	✓

## Physical Features

Reset Button	rear
Cable Hot-swappable	✓
Power Supply Slot	4

# Specifications

## Physical Features

Model	RG-NBS7006
Power Supplies	modular power supply
Power Consumption	≤ 100W
EEE	✓
Fan	2
Airflow	Left/right-to-Rear
Fan Adaptive Speed Adjustment	✓
Acoustic Noise	< 55dB
Operating Temperature	0°C to 50°C (32°F to 122°F)
Storage Temperature	-40°C to 70°C (-40°F to 158°F)
Operating Humidity	10% to 90% RH
Storage Humidity	5% to 95% RH
Port Surge	6 kV
Operating Altitude (meters)	-500 to 5000
Certificate	CE, RoHS

## Power Supply and Fan

RG-PA600I-FS	RG-NBS7006 Power Module (support redundancy,AC, 600W)
M7006-FAN	NBS7006-FAN x 2 (equipped by default)

## Line Card & Service Module

M7000-24GT2XS-EA	24 Gigabit Ethernet copper port (RJ45) + 2 10-gigabit Ethernet fiber port (SFP+,LC) Power Consumption $\leq$ 50W
M7000-48GT2XS-EA	48 Gigabit Ethernet copper port (RJ45) + 2-port 10-gigabit Ethernet fiber port (SFP+,LC) Power Consumption $\leq$ 60W
M7000-24SFP2XS-EA	24 Gigabit fiber port (SFP,LC) + 2 10-Gigabit Ethernet fiber port (SFP+,LC) Power Consumption $\leq$ 70W
M7000-48SFP2XS-EA	48 Gigabit fiber port (SFP,LC) + 2 10-Gigabit Ethernet fiber port (SFP+,LC) Power Consumption $\leq$ 90W
M7000-24GT24SFP2XS-EA	24 Gigabit Ethernet copper port (RJ45)+ 24 Gigabit fiber port (SFP,LC)+ 2 10-gigabit Ethernet fiber port (SFP+,LC) Power Consumption $\leq$ 80W
M7000-8XS-EA	8 10-Gigabit Ethernet fiber port (SFP+,LC) Power Consumption $\leq$ 40W
M7000-16XS-EA	16 10-gigabit Ethernet fiber port (SFP+,LC) Power Consumption $\leq$ 82W
M7006-CM	Supervisor Engine Module Power Consumption $\leq$ 30W

# Package Contents

Device	RG-NBS7006
Mounting Bracket	2
Foot pad	4
Power supply	modular power supply
Quick Start Guide	1
Warranty Card	1
Accessories	Screws * 8
Package Weight	31.25 kg
Package Dimension (w x d x h)	442 mm x 410 mm x 396 mm 9U

**Ruijie | Rcycc**

 **Redefine your easy network**

---

**Copyright ©2000-2023 Ruijie Networks Co., Ltd. All rights reserved.**

No part of this document may be reproduced or transmitted in any form or any means without prior written consent of Ruijie Networks Co., Ltd.

**Notice**

This content is applicable only to regions outside the China mainland. Ruijie Networks Co., Ltd. reserves the right to interpret this content.

The information contained herein is subject to change without notice. Nothing herein should be construed as constituting an additional warranty. Ruijie Networks Co., Ltd. shall not be liable for technical or editorial errors or omissions contained herein.



Ruijie Networks Co., Ltd.  
Building 19, Juyuanzhou Industrial Park, No.618  
Jinshan Road, Cangshan District, Fuzhou, Fujian, China  
Website: <https://www.ruijienetworks.com>